

Reaching for Equity & Excellence:

California's Educational Progress and the Path Ahead

February 21, 2019

#CAWay

@LPI_Learning | @EdSource



EdSource

Get Connected

Free WiFi:

- Sacramento-Public-Library
- No password

Join the conversation on Twitter:

- #CAWay
- @LPI_Learning | @EdSource

*Restrooms are located to the right of the stage
and by the registration tables*

Welcome

Patrick Shields | @shields_lpi @LPI_Learning

Executive Director, Learning Policy Institute

Louis Freedberg | @louisfr @EdSource

Executive Director, EdSource

An aerial photograph of Los Angeles, California, taken during the golden hour of sunset. The city's skyline is visible in the distance, with several prominent skyscrapers. The foreground shows a dense residential area with many houses and trees, all bathed in the warm, orange light of the setting sun. The sky is a clear, pale blue.

THE California Way

The Golden State's Quest to Build an
Equitable and Excellent Education System



**LEARNING
POLICY
INSTITUTE**

Roberta C. Furger, Laura E. Hernández, & Linda Darling-Hammond

February 21, 2019

The Golden State: Then & Now

2009

2019

Deep recession



Economic growth

Inequitable and
irrational funding



Local Control
Funding Formula (LCFF)

No Child Left Behind



ESSA

California
state standards



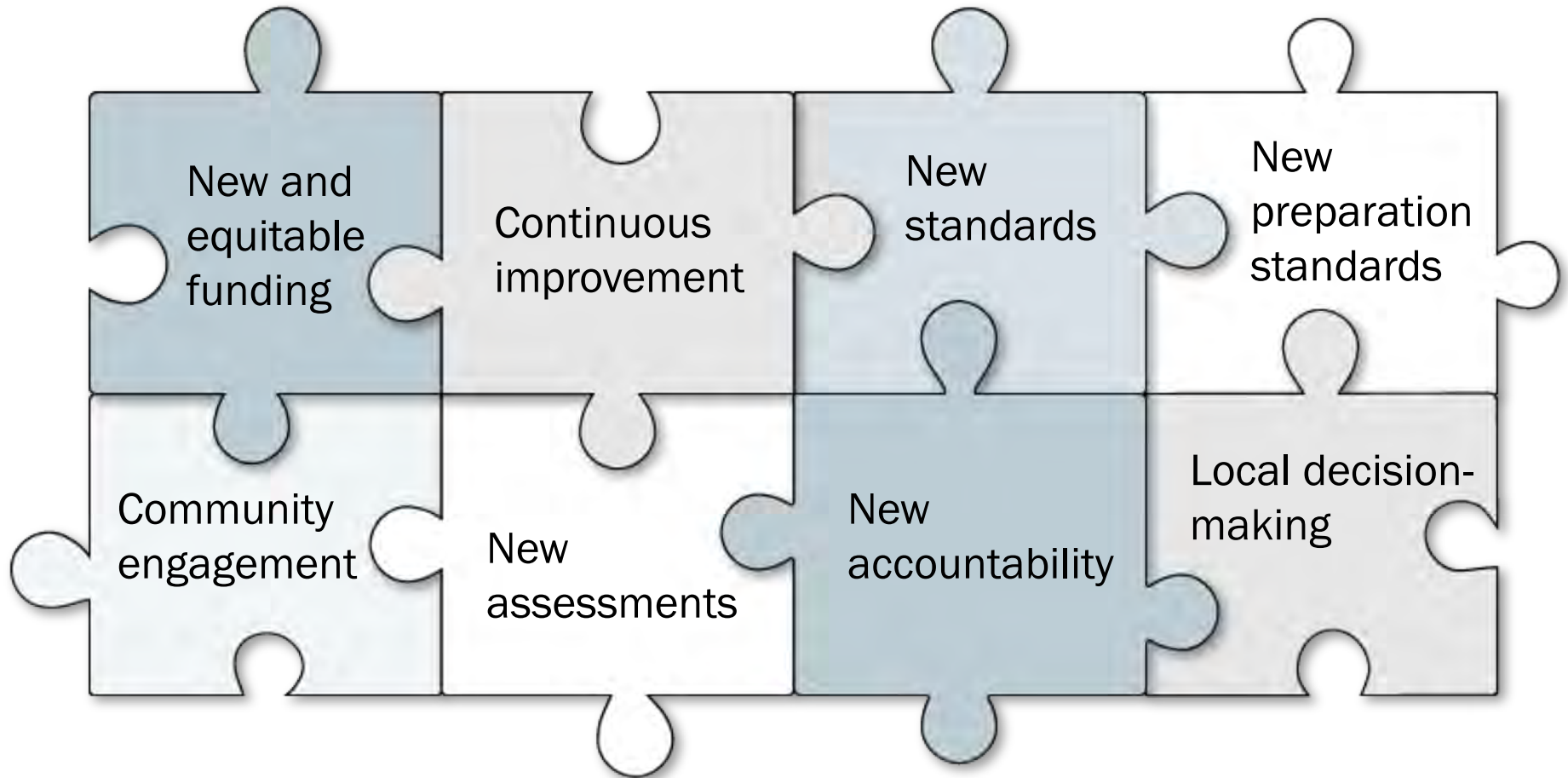
Common Core
State Standards

Audits and
compliance reviews



Local
decision making

The Sea Change in California's Education Landscape



Our Research

Central Questions

- How did we get here?
- How have practice and culture changed?
- What challenges remain to advancing equity and excellence?

Our Research

Research Design

- Exhaustive literature review
- 34 targeted interviews

A map of California with a red pushpin on Sacramento and a purple line running from the top right to the bottom left. The text "What Progress has California Made?" is overlaid in white. The map shows major cities, rivers, and geographical features like the Great Basin and Death Valley.


What Progress has California Made?

Improvement in School Funding

- More equitable funding among districts
- Shifting mindsets and culture
- Increased support for high-need students

“Equity is a key part of the conversation.”

—John Affeldt,
Public Advocates



Roadblocks to Resource Equity

- California's "Silent Recession"
- Inadequate k-12 funding
- More transparency on supplemental and concentration funds use
- Overcoming compliance orientation

Changes in Teaching & Learning

- Reinvestment in capacity building
- Increased site-based collaborative learning
- Growth of professional learning networks
- Shifting curriculum and instruction



Barriers to Continuous Improvement

- Improving professional learning
- Supporting underserved groups
- Ongoing teacher shortage



Improvements in School Climate

- Increasing the number of adults in schools
- Programs and policies to improve climate and culture
- Use of climate surveys to inform improvement

In the first 3 years of LCFF, districts added

17% more counselors

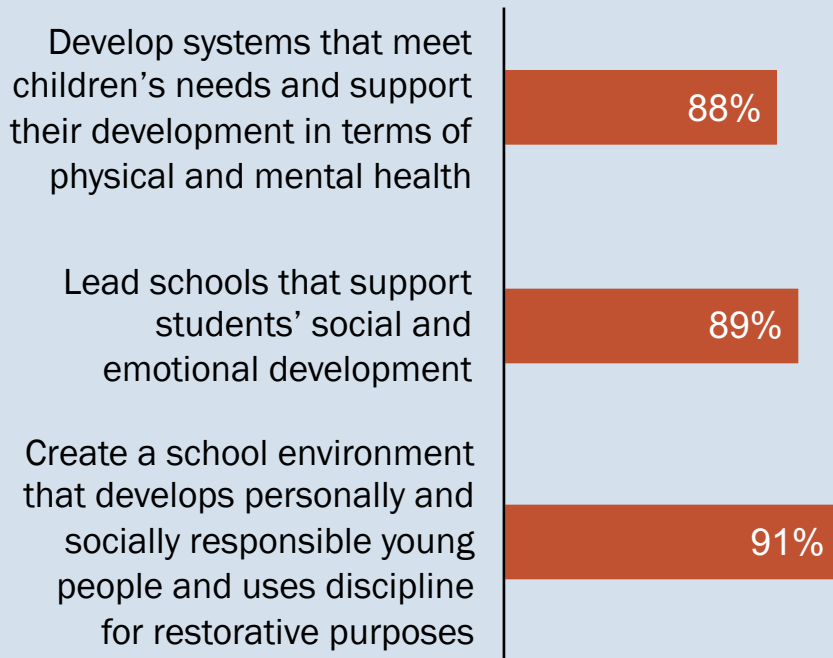
19% more social workers

21% more psychologists

Source: Edunomics Lab at Georgetown University

Areas for Growth in School Climate

California Principals Report Wanting More Professional Development by Topic



- More class size reductions and social services
- Moving toward more effective school climate data
- Building capacity to improve school climate

Source: *Learning to lead: Understanding California's learning system for school and district leaders*. Policy Analysis for California Education.

Engaging Communities

- Broad support for engagement requirements
- More opportunities for stakeholders to engage
- Community groups and partners augmenting district capacity

75% of
superintendents

agree that requiring
parent and community
involvement as part of the
LCFF ensures district goals
and strategies align with
local needs.

Source: LCFFRC survey



Roadblocks to Deeper Engagement

- Challenges of the LCAP process
- District capacity does not match aspiration
- More intentional relationship building



Assessing Impact

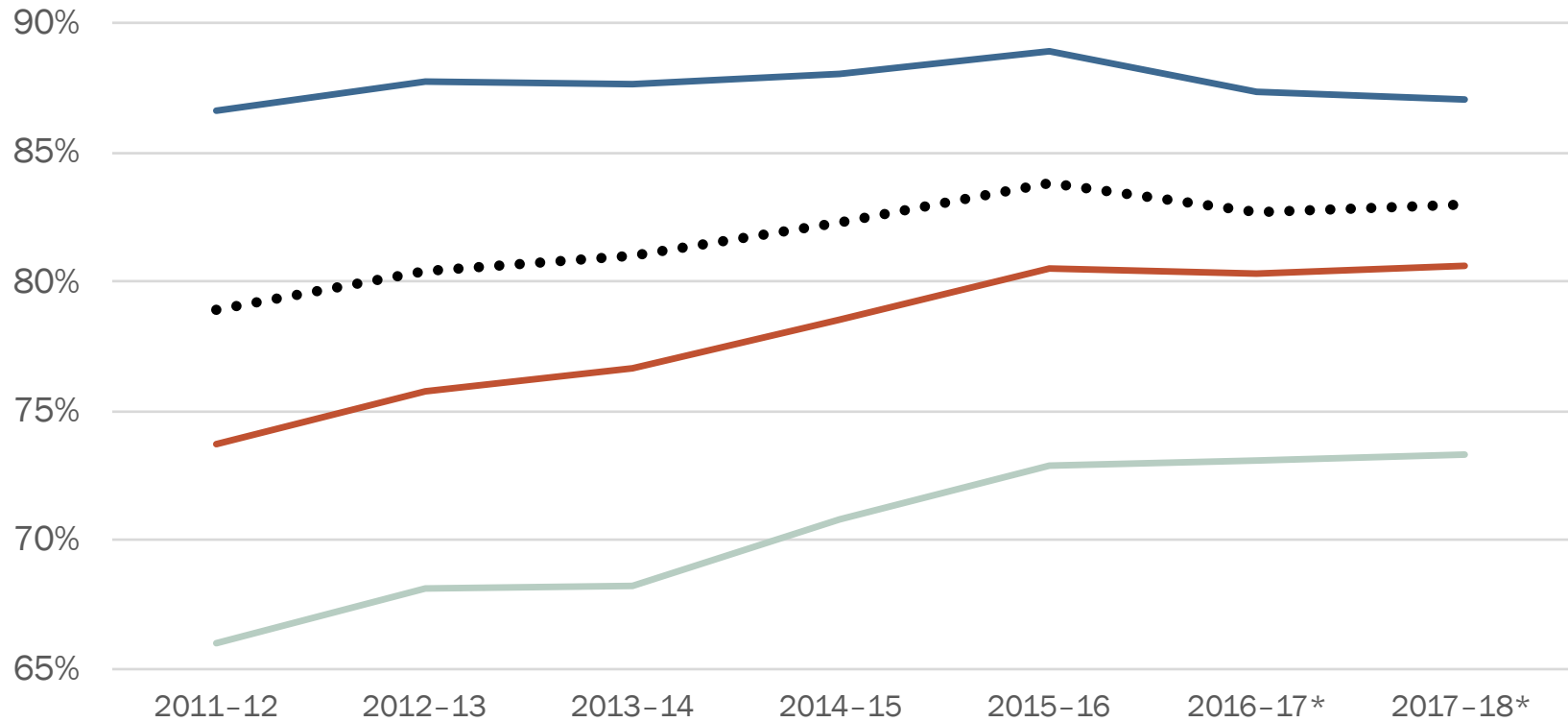
Academic Achievement

National Assessment of Educational Progress (NAEP)

| CA 8 th Graders | 2007 Average <i>(national average)</i> | 2017 Average <i>(national average)</i> |
|----------------------------|---|---|
| Reading Scores | 251 (261) | 263 (266) |
| Math Scores | 270 (280) | 277 (282) |

Source: The Nation's Report Card state profiles: California.

Graduation Rates

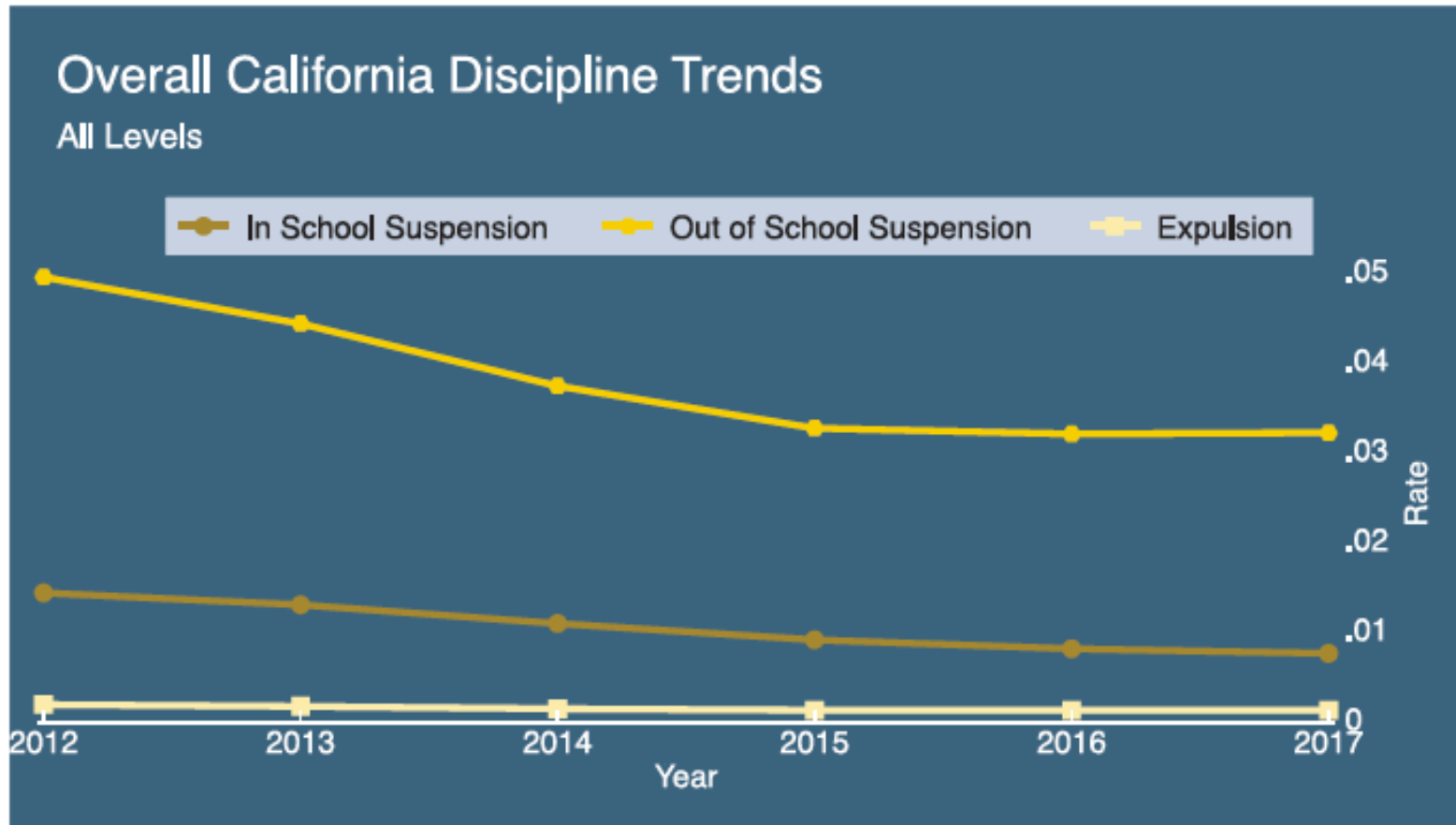


— White •••• California average
— Hispanic or Latino — African American

*To meet federal requirements, a new graduation methodology was used to calculate rates in 2017 and 2018.

Source: California Department of Education.

Suspensions and Expulsions



Source: *A portrait of educational outcomes in California*. Policy Analysis for California Education.



The Road Ahead

Stay the Course, but Deepen Impact

Funding

- Increased adequacy and equity
- Improved transparency in budgeting and planning
- Early childhood investments

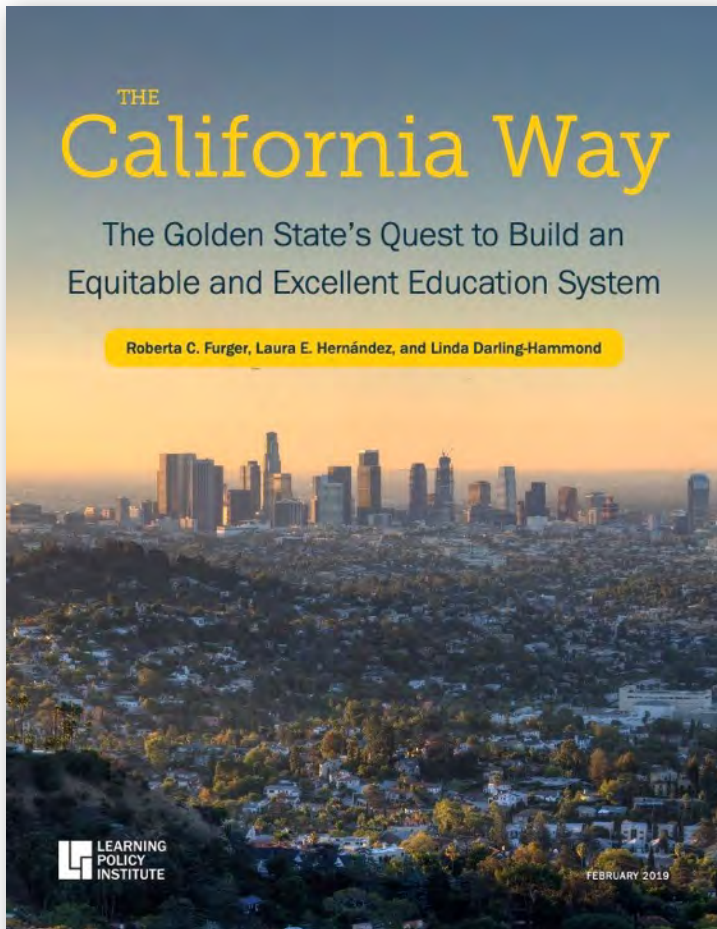
Capacity building

- Professional learning infrastructure
- Networks for professional learning

Staffing

- Policies to build stable and diverse teacher workforce
- Leadership development

Learning Policy Institute Resources



Reports

learningpolicyinstitute.org/reports

Sign up for updates

bit.ly/LPIupdates

Follow LPI on Twitter

@LPI_Learning

Contact Roberta C. Furger

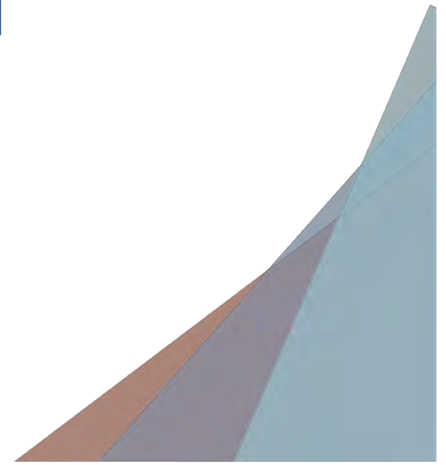
rfurger@learningpolicyinstitute.org



Tony Thurmond

State Superintendent of Public Instruction
California Department of Education

@TonyThurmond @CADeptEd



Changing Culture and Practice to Advance Equity and Excellence

MODERATOR

Louis Freedberg | @louisfr @EdSource

Executive Director, EdSource

Michael Kirst | @Michael_Kirst @StanfordEd

Emeritus Professor of Education, Stanford University; former President, California State Board of Education

Francisco Escobedo | @JoseFra78449306 @CVESDnews

Superintendent, Chula Vista Elementary School District

Danielle Letts | @Danielle_Letts @AlumRockUnion

Teacher, Hubbard Media Arts Academy; Member, Instructional Leadership Corps

Aurea Montes-Rodriguez | @CoCoSouthLA

Executive Vice President, Community Coalition

David Rattray | @david_drattray @LAAreaChamber

Executive Vice President, Los Angeles Chamber of Commerce

Break

Free WiFi:

- Sacramento-Public-Library
- No password

Join the conversation on Twitter:

- #CAWay
- @LPI_Learning | @EdSource

*Restrooms are located to the right of the stage
and by the registration tables*

Scaling and Sustaining Equity and Excellence

MODERATOR

Roberta Furger | [@RobertaFurger](#) [@LPI_Learning](#)

Senior Writer and Director of Storytelling, Learning Policy Institute

Heather Hough | [@hjough](#) [@edpolicyinca](#)

Executive Director, Policy Analysis for California Education

Rucker Johnson | [@GoldmanSchool](#)

Associate Professor of Public Policy, UC Berkeley

John Kim | [@flowing_chi](#) [@AP_California](#)

Executive Director, Advancement Project California

Tom Armelino | [@CCEECA](#)

Executive Director, California Collaborative for Educational Excellence

Patrick O'Donnell | [@AsmPatODonnell](#)

Chair, Assembly Education Committee, California State Assembly (D-Long Beach)

Table Discussion

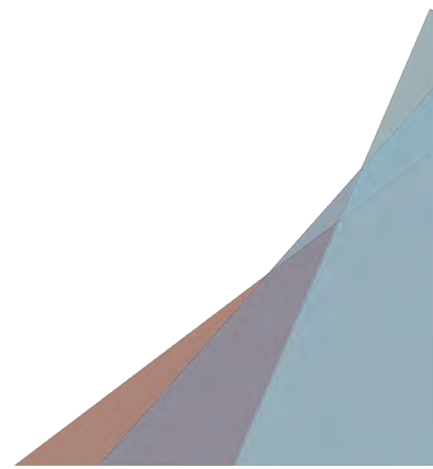
- From your perspective, where have you seen emerging strengths in education over the past eight years?
- Where do you still see challenges, and what policy moves are needed to address them?

Next Steps for California

Linda Darling-Hammond

President and CEO, Learning Policy Institute

@LDH_ed @LPI_Learning



Closing

Louis Freedberg | @louisfr @EdSource

Executive Director, EdSource

Thank you for coming!

Learning Policy Institute

Website:

learningpolicyinstitute.org

Mailing list:

bit.ly/LPIupdates

Twitter:

@LPI_Learning

EdSource

Website:

edsource.org

Mailing list:

edsource.org/subscribe

Twitter:

@EdSource

Please share your feedback about this event using the evaluation forms on your table